



(a) Barrage Balloon on
Psalter Lane



(b) Bombed
houses on
Westbrook Bank

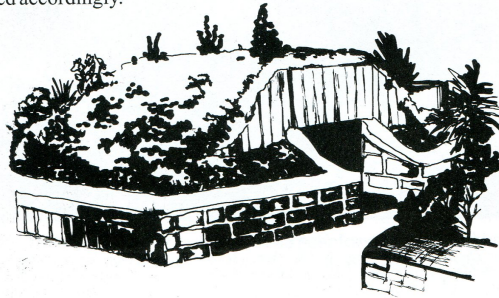


(c) Bombed houses on
Kenwood Road

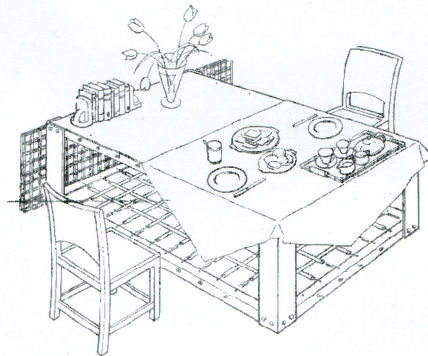
(d) Bomb shelters

Shelter for the People

For the general public the government provided various types of shelter in which they could attempt to evade any potential air-raid. Public shelters were provided generally in the basements of commercial buildings. These basements would often be strengthened accordingly.



Anderson Shelter: Built in private gardens using corrugated steel. They were built partially underground for further blast protection. Some 150,000 Anderson shelters were built. Some survive today as garden storage. Conditions in winter were cold and damp and it was not uncommon for people to prefer to stay in their houses!



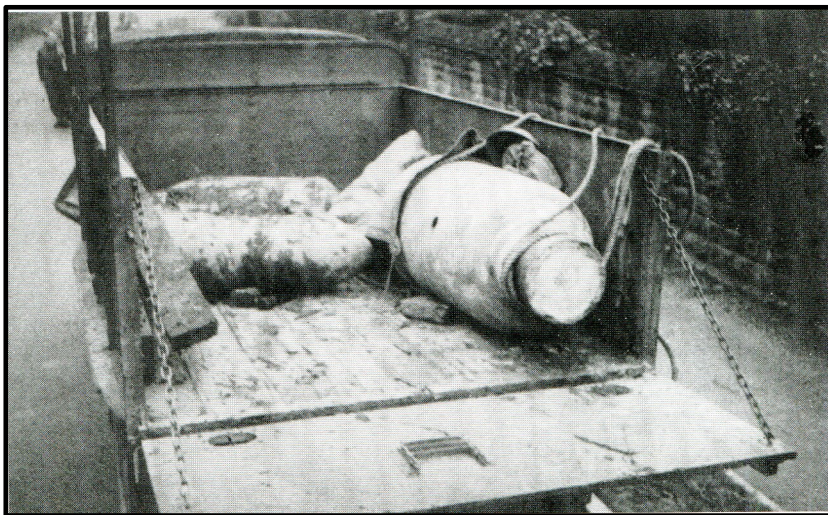
Morrison Shelter: Made from steel and assembled in a downstairs room. In the event of a raid the family would take shelter in this cage. If the house was hit then the structure would protect the occupants from falling masonry. The illustration above shows the shelter being used as a table. There were concerns that people could be trapped in burning buildings with these shelters, however, over 500,000 were distributed free and saved countless lives.



(e) Firemen operating a stirrup pump



(f) Bomb damage at
Nether Edge Hospital



(g) Unexploded bomb
on a lorry on Chelsea
Road



(h) VE Day Party
on Edge Bank 1945
Bryan Ellis (front
right)